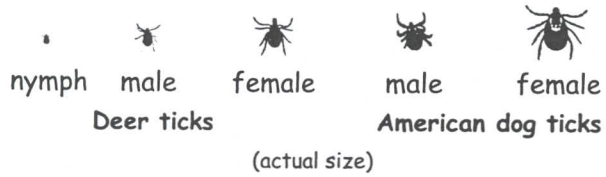


TICK IDENTIFICATION CARD



MA Department of Public Health
617.983.6800
www.mass.gov/dph

TICK TIPS

Deer tick nymphs and adults may carry germs that cause Lyme disease, babesiosis or human granulocytic anaplasmosis (ehrlichiosis). American dog ticks can carry germs that cause Rocky Mountain spotted fever and tularemia.

Ticks are generally found in wooded habitats, near the ground. Deer ticks may be active year-round, but spring, summer and fall are seasons of high risk. Dog ticks are most active in spring and summer.

Ticks may be seen more readily on light colored clothing. Use repellents appropriately. Do tick checks daily.

Remove attached ticks at once. Grasp the tick close to the skin and pull upward using fine-point tweezers. Avoid squeezing the tick.

If you suspect that you have a tick-borne disease, see your doctor. 6/07