

ADDRESS OF PROPERTY
L.C. LOT 2A, REDMOND STREET
BURLINGTON, MASSACHUSETTS

OWNER OF RECORD
SOMERSET REALTY TRUST
ROBERT W. MURRAY, TRUSTEE
27 CAMBRIDGE STREET
BURLINGTON, MASSACHUSETTS

DEED REFERENCE
DEED BOOK 72575 PAGE 571
LAND COURT DOCUMENT 01668573
DEED BOOK 1451, PAGE 33
CERT#: 256348

PLAN REFERENCE
L.C. PLAN 41177-A
PLAN BOOK 212 PLAN 48
PLAN 61 OF 2020

ASSESSORS MAP REFERENCE
PARCEL 29-75-1
ZONING CLASSIFICATION
RO-ONE FAMILY DWELLING

ADDRESS OF PROPERTY
LOTS 155-170, REDMOND STREET
BURLINGTON, MASSACHUSETTS

OWNER OF RECORD
SHELMAC REALTY TRUST
P. O. BOX 276
MOULTONBORO, NEW HAMPSHIRE

DEED REFERENCE
DEED BOOK 12517, PAGE 551
PLAN REFERENCE
PLAN BOOK 212 PLAN 48

ASSESSORS MAP REFERENCE
PARCEL 29-84-0
ZONING CLASSIFICATION
RO-ONE FAMILY DWELLING

WETLAND AND STREAM NOTES:

WETLANDS DELINEATED BY MARY TRUDEAU IN APRIL & MAY 2013 AND APRIL 2018. WETLAND FLAGS LOCATED IN THE FIELD BY COMMONWEALTH ENGINEERING INC. IN APRIL & MAY 2013 AND APRIL 2018.

LOCATION OF REGULATORY STREAM COMPILED FROM "REGULATORY STREAMS OF BURLINGTON" MAP ISSUED BY THE BURLINGTON CONSERVATION COMMISSION AND FROM TOWN TOPOGRAPHIC MAPPING.

LEC WETLAND FLAGS DELINEATED BY RICHARD KIRBY AND THOMAS PERAGALLO IN MAY 2021. WETLAND FLAGS LOCATED IN THE FIELD BY COMMONWEALTH ENGINEERING INC. IN MAY 2021.

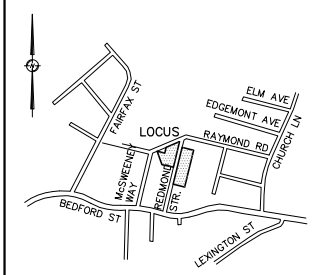
ALL TEST PITS WERE EVALUATED BY ERICH R. NITZSCHE, PE OF COMMONWEALTH ENGINEERING INC. AND WERE PERFORMED ON DECEMBER 29, 2020 AND JANUARY 6, 2021. TEST PITS WERE WITNESSED BY CHRISTINE MATHIS OF THE BURLINGTON BOARD OF HEALTH.

FOR DETAILS ON REPLICATION SEE "WETLANDS CONSTRUCTION PROTOCOL" PREPARED BY MARY TRUDEAU, DATED SEPTEMBER 7, 2021.

THE PARCEL OF PROPERTY SHOWN HEREON LIES WITHIN ZONE "X" AS SHOWN ON THE FLOOD INSURANCE RATE MAP NO. 25017C0289E, EFFECTIVE DATE: JUNE 4, 2010.

NOTES:

- UTILITY LOCATIONS SHOWN ARE BASED UPON A FIELD SURVEY, CONTRACTORS' NOTES, AND RECORD UTILITY PLANS. THE LOCATIONS OF UNDERGROUND PIPES AND CONDUITS HAVE BEEN DETERMINED FROM THE AFOREMENTIONED ITEMS AND ARE APPROXIMATE ONLY. BEFORE PLANNING FUTURE CONNECTIONS, CONTACT "DIGSAFE" AT 1-800-322-4844. IN ADDITION, THE CONTRACTOR SHALL COORDINATE CONSTRUCTION ACTIVITIES NEAR UTILITY LOCATIONS WITH THE RESPECTIVE UTILITY REPRESENTATIVE.
- VERTICAL DATUM=N.A.V.D. 1988



LOCUS MAP NOT TO SCALE

COMMONWEALTH ENGINEERING INC.
CIVIL ENGINEERS & LAND SURVEYORS
27 CAMBRIDGE STREET
SUITE 106
BURLINGTON, MA 01803
TEL (781) 229-0411
FAX (781) 229-0520
WWW.COMMONENG.COM

4 & 5 REDMOND STREET
IN
BURLINGTON
MIDDLESEX COUNTY
MASSACHUSETTS

SEPTEMBER 7, 2021

NOTICE OF INTENT
CONSTRUCTION PLAN

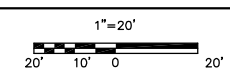
APPLICANT:

SOMERSET REALTY TRUST
ROBERT W. MURRAY, TRUSTEE
27 CAMBRIDGE STREET
BURLINGTON, MASSACHUSETTS

REVISIONS:

NO.	DATE	DESCRIPTION

SCALE:



FIELD: DDO/JPH/ERN

CALCULATED: DDO

DRAWN: ERN/DNR

CHECKED: DDO/DNR

FILE PATH (H:/PROJ):...212033.00\DWG\
...REDMOND_STREET\CEI-DEFIN.DWG

TAB: NOI-CON

SHEET:

JOB NO.: 218001.00

NOI-CON

REGISTRY USE ONLY

LEGEND

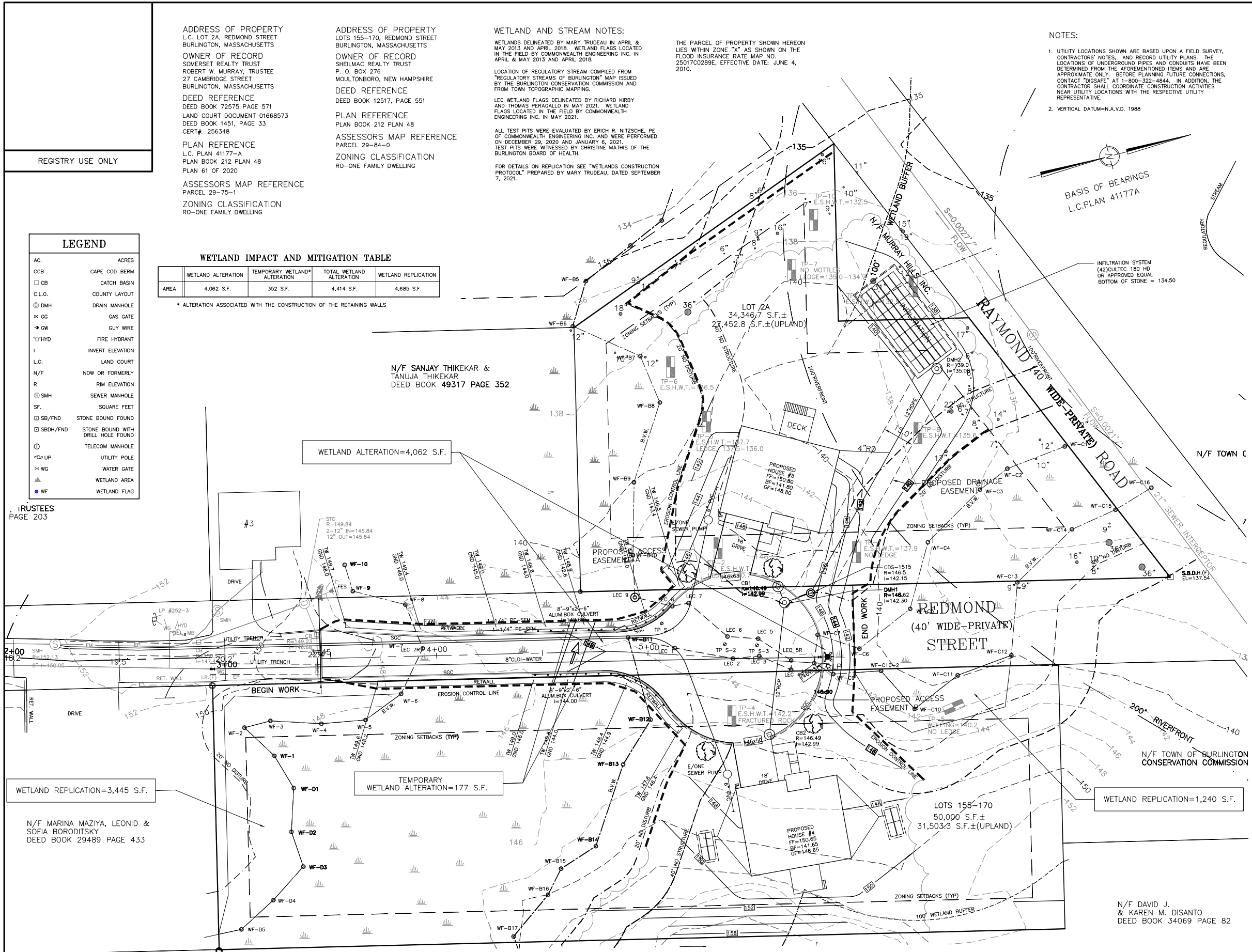
- AC. ACRES
- CCB CAPE COD BERM
- CB CATCH BASIN
- C.L.O. COUNTY LAYOUT
- DMH DRAIN MANHOLE
- GG GAS GATE
- GW GUY WIRE
- HYD FIRE HYDRANT
- I INVERT ELEVATION
- L.C. LAND COURT
- N/F NOW OR FORMERLY
- R RIM ELEVATION
- SMH SEWER MANHOLE
- SF. SQUARE FEET
- SB/FND STONE BOUND FOUND
- SBDH/FND STONE BOUND WITH DRILL HOLE FOUND
- TELECOM MANHOLE
- UP UTILITY POLE
- WG WATER GATE
- WETLAND AREA
- WF WETLAND FLAG

WETLAND IMPACT AND MITIGATION TABLE

WETLAND ALTERATION	TEMPORARY WETLAND* ALTERATION	TOTAL WETLAND ALTERATION	WETLAND REPLICATION
AREA	4,062 S.F.	352 S.F.	4,414 S.F.
			4,685 S.F.

* ALTERATION ASSOCIATED WITH THE CONSTRUCTION OF THE RETAINING WALLS

TRUSTEES
PAGE 203



N/F SANJAY THIKEKAR & TANUJA THIKEKAR
DEED BOOK 49317 PAGE 352

WETLAND ALTERATION=4,062 S.F.

TEMPORARY WETLAND ALTERATION=177 S.F.

WETLAND REPLICATION=3,445 S.F.

WETLAND REPLICATION=1,240 S.F.

N/F MARINA MAZIYA, LEONID & SOFIA BORODITSKY
DEED BOOK 29489 PAGE 433

N/F DAVID J. & KAREN M. DISANTO
DEED BOOK 34069 PAGE 82