

ZONING ARTICLES

ARTICLE NUMBER – 6

ARTICLE NAME – Article III Burlington Signage Districts

AMOUNT - \$0

To see if the Town will vote to amend Article III, “Establishment of Districts”, Section 3.1.0 Location of Districts, by adding a new district in the Overlay Districts titled: BSD Burlington Signage Districts
And the following new paragraph to Section 3.2.0 Location of Districts:

Burlington Signage Districts: As shown on the map entitled, “Town of Burlington Signage Districts” prepared by the Town of Burlington, and dated January 2025.

or to act in any other manner in relation thereto.

Submitted by the Select Board

Requested by the Zoning Bylaw Review Committee

LEGEND

Signage District

Town Center Signage District

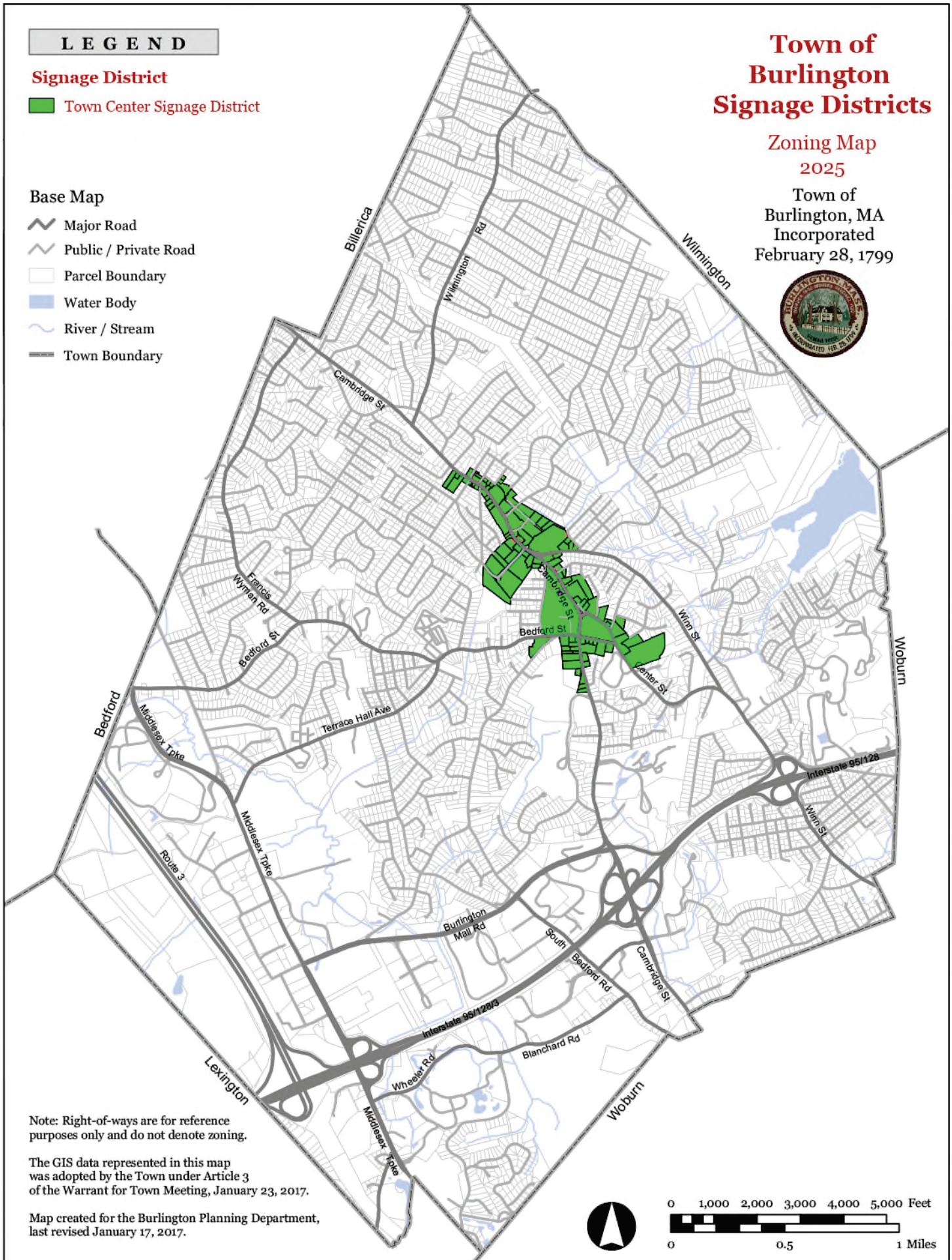
Base Map

- Major Road
- Public / Private Road
- Parcel Boundary
- Water Body
- River / Stream
- Town Boundary

Town of Burlington Signage Districts

Zoning Map
2025

Town of
Burlington, MA
Incorporated
February 28, 1799



Note: Right-of-ways are for reference purposes only and do not denote zoning.

The GIS data represented in this map was adopted by the Town under Article 3 of the Warrant for Town Meeting, January 23, 2017.

Map created for the Burlington Planning Department, last revised January 17, 2017.



0 1,000 2,000 3,000 4,000 5,000 Feet
0 0.5 1 Miles