




## Landscape Contractors


Landscape and garden maintenance activities can be significant contributors to water quality problems.


 *If fertilizer is spilled on the pavement or sidewalk, sweep it up immediately and place back into container.*





 *Cover dirt or mulch piles to avoid rain washing materials into our storm sewer.*


 *Seed or mulch bare areas as soon as possible to prevent soil erosion.*

 *Avoid fertilizing near ditches and streams. Also, do not spray pesticides within 25 ft of our streams.*

 *Irrigate slowly and inspect the system for leaks, over-spraying and runoff. Adjust timers to avoid over-watering.*

 *Do not dispose of grass clippings, branches, clippings, sticks, or other vegetation in our streams.*

 *Use a blower or sweep pavement onto grass. Never allow sweepings, wash water, or sediment to enter storm drain.*

 *Schedule grading and excavation projects for dry weather.*

 *Use temporary check dams or ditches to divert runoff away from storm drains.*

Presort Std  
U.S. Postage  
PAID  
Permit No. 5  
Burlington, MA

Town of Burlington  
Department of Public Works  
Town Hall  
Burlington, MA 01803

## Best Practices for All Businesses

- Keep the area around the dumpster clear of trash and other debris. Do not overfill.*
- Cover dumpsters to block insects, animals, rainwater, and wind.*
- Do not rinse your dumpster area since grease and trash enter storm drain.*
- Make sure that parking lots, driveways, and sidewalks are swept frequently of debris.*
- Avoid over watering, which washes fertilizer into storm drains.*
- Remove any trash from your outside areas and conduct routine inspections.*



Printed on recycled paper

## TOWN OF BURLINGTON

## Storm Water Pollution Prevention in the Workplace

### Food Service Facilities



### Automotive Service And Repair Shops



### Landscape Contractors

Prepared by  
Burlington Department of Public Works  
25 Center Street  
Burlington, MA 01803

## What is Storm Water Runoff?

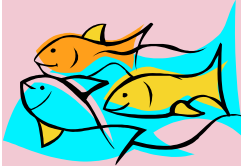
*In developed areas, rain or snow that falls on impermeable roofs, parking lots, streets, and lawns is not absorbed.*



*The precipitation (called storm water runoff) contains contaminants which then enters local water bodies through storm sewer systems.*

## What is Storm Water Pollution?

*Polluted storm water runoff is a leading cause of contamination entering our streams.*



*This discharge can destroy fish, wildlife, and aquatic life habitats; lessen aesthetic value; and threaten public health with contaminated drinking water supplies.*

*Storm water runoff can originate from many different businesses. Without good management practices, food service, automotive service and repair shops and landscape contractors may be sources of pollutants into storm water runoff.*



*Wash water, fats-oils-greases, lawn chemicals, paints, and eroded soil may be pollutants when washed into the storm water.*

## Automotive Service and Repair Shops

- ✓ *Always use drip pans to capture fluids.*
- ✓ *Use solid absorbent cleaners instead of water to clean work areas. Contact a licensed hazardous waste hauler to dispose of saturated absorbents.*
- ✓ *Scrape parts with a wire brush rather than use liquid cleaners*
- ✓ *Keep your liquid wastes segregated. Recycle solvents, oil and used filters, anti-freeze, batteries, lubricants, and metal filings collected from grinding/polishing auto parts.*
- ✓ *Store materials inside or under cover to prevent contamination from rainwater.*
- ✓ *Properly maintain vehicles to prevent leaks that discharge hazardous fluids.*
- ✓ *Do not hose down your shop floor. It is best to sweep regularly.*
- ✓ *Use non-toxic cleaning products:*
  - *Baking soda paste works well on battery heads and cable clamps*
  - *Bio-degradable dishwashing soap with baking soda will clean wheels and tires.*
  - *Vinegar and water can be used for cleaning car windows.*



## Food Service Facilities

*Fats, oils, and grease can cause sewer line blockages which can make sewers overflow into your facility. To stop these substances from building up in sewer lines, prevent them from entering your drains.*

- ✓ *Scrape grease and food waste from floor mats and filters before cleaning. Follow-up with dry wiping pots, pans, dishware, and work areas to remove all visible grease before washing and sanitizing.*
- ✓ *After scraping, clean floor mats, filters, and garbage cans in a mop sink or a designated curbed area.*
- ✓ *Never hose a spill into a gutter, street, or storm drain. Absorb wet spills with cat litter or towels; discard in the trash.*
- ✓ *Never wash grease outdoors. The runoff from this washing goes into the storm water system and our streams.*
- ✓ *Internal and external grease traps must be cleaned periodically. Service records should be maintained on the premises and readily accessible to the Board of Health inspectors.*
- ✓ *Use drain screens to capture food waste and dispose of properly in trash.*
- ✓ *Train employees about proper grease disposal. Do not place grease and oils in the dumpster.*

