

RECEIVED  
JUL 24 2017  
PLANNING DEPARTMENT

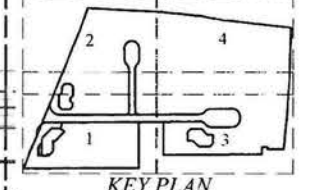


Vanasse Hangen Brustlin, Inc.  
Transportation  
and Development  
Environmental Services



Approved by the  
BURLINGTON PLANNING BOARD  
Chairman

*Paul...*  
*...*  
*...*  
APPROVED 9-17-2016



PREPARED FOR:  
NATIONAL DEVELOPMENT

NO	DESCRIPTION	DATE
4	NEW ENCLOSED SET	08/26/15
2	FIELD CHANGES	08/24/15
2	BID ADDENDUM	11/14/14
1	PLAN UPDATES	8/20/14

EXISTING BUILDING 5

PROPERTY NOT OWNED BY NEEP INVESTORS HOLDINGS INC.

New England Executive Park  
Renovations and Expansion  
Phase 1 & 2  
New England Executive Park  
Burlington, Massachusetts

Local Approvals

Layout and Materials Plan

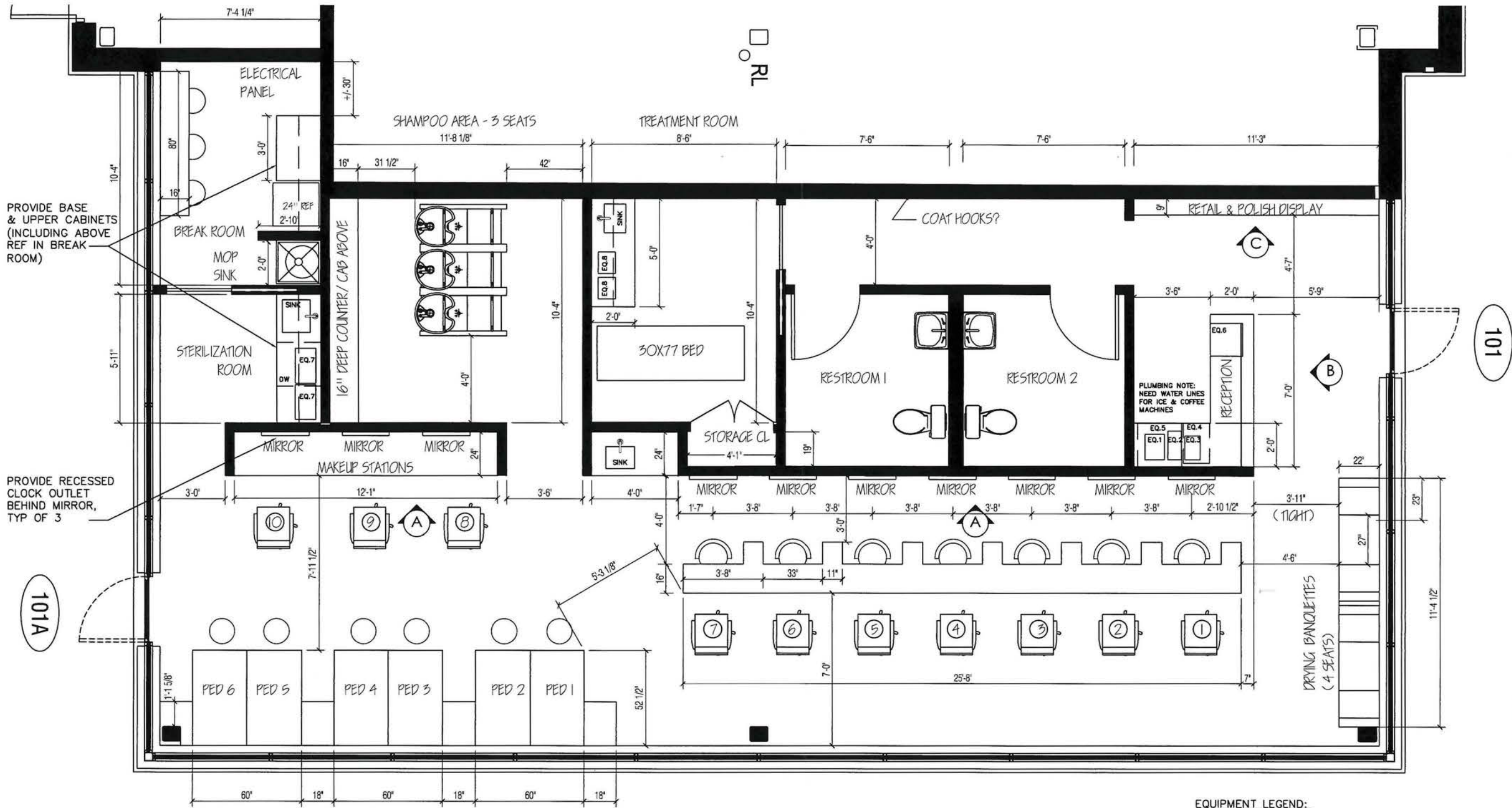


C-3.1

Sheet 3 of 17

11-09-15

760E d



PROVIDE BASE & UPPER CABINETS (INCLUDING ABOVE REF IN BREAK ROOM)

PROVIDE RECESSED CLOCK OUTLET BEHIND MIRROR, TYP OF 3

101A

101

RECEIVED  
JUL 24 2017  
PLANNING DEPARTMENT

- EQUIPMENT LEGEND:**
- EQ.1 - KEURIG COFFEE MACHINE
  - EQ.2 - NESPRESSO MACHINE
  - EQ.3 - NESPRESSO FOAMER
  - EQ.4 - WATER/ICE COMBINATION
  - EQ.5 - REFRIGERATOR
  - EQ.6 - BASE CABINET FOR GLASSWARE
  - EQ.7 - DRY HEAT STERILIZER
  - EQ.8 - WAX WARMER

MANE & MANI @ THE DISTRICT, BURLINGTON - FLOOR PLAN  
SCALE: 1/4" = 1'-0" DATE: 14-APRIL-2017

DESIGN DRAWING ONLY, NOT FOR CONSTRUCTION  
ALL DIMENSIONS TO BE VERIFIED IN FIELD

PLAN REVISION: 11

**MANDARINA**  
INTERIOR DESIGN STUDIO

