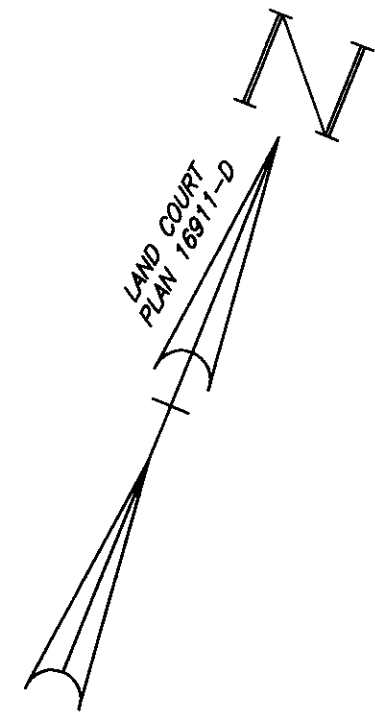


LEGEND

- EXISTING CONTOUR 135
- EXISTING SPOT ELEVATION
- EDGE OF PAVEMENT
- PAINTED ISLAND
- CATCH BASIN
- DRAIN MANHOLE
- SEWER MANHOLE
- EXISTING TREE
- WATER SHUTOFF
- WATER GATE
- HYDRANT
- UTILITY POLE
- FENCE GATE
- FLOOD PLAIN LINE (APPROXIMATE)
- FLOOD ELEVATION LINE (APPROXIMATE) 138



NOTES

ELEVATIONS SHOWN ARE REFERENCED TO THE NATIONAL GEODETIC VERTICAL DATUM (N.G.V.D.) OF 1929

PROPERTY LIES WITHIN A FLOOD HAZARD AREA (ZONE A OR V) AS SHOWN ON FLOOD INSURANCE RATE MAP COMMUNITY PANEL# 250185 003 B DATED JULY 5, 1984

LOCUS MAY BE AFFECTED BY DOCUMENTS #478839 AND #608311 REGISTERED IN THE MIDDLESEX REGISTRY OF DEEDS

HYDRANT FLOW TEST AT INTERSECTION OF MIDDLESEX TURNPIKE AND WHEELER STREET ON APRIL 23, 1998 RESULTED IN AN ACTUAL FLOW OF 2,978 GPM AND A FLOW OF 4,884 GPM AT 20 PSI.

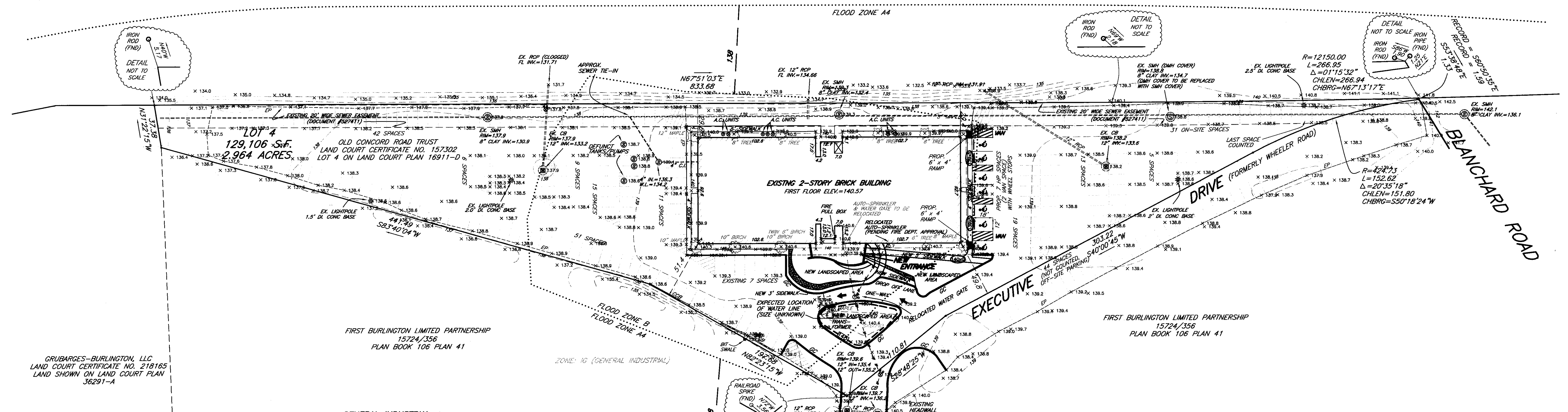
THE CONTRACTOR SHALL GIVE TWENTY-FOUR (24) HOUR NOTICE TO PERTINENT TOWN DEPARTMENTS BEFORE COMMENCING ANY WORK IN THE FIELD

I CERTIFY THAT I HAVE CONFORMED WITH THE RULES AND REGULATIONS OF THE REGISTERS OF DEEDS IN PREPARING THIS PLAN.

[Signature]
HAYES ENGINEERING, INC.

NORTHERN CIRCUMFERENTIAL HIGHWAY

(ROUTE 128 - 1960 STATE HIGHWAY LAYOUT - PLAN NO. 1470 OF 1960 - PUBLIC - VARIABLE WIDTH)



GENERAL INDUSTRIAL ZONING TABLE

	REQUIRED	EXISTING	PROPOSED
MIN. LOT AREA	40,000 SF	129,106 SF	129,106 SF
MIN. LOT FRONTAGE	150 FT	566.65 FT	566.65 FT
MIN. FRONT YARD	25 FT	49.8'	49.8'
MIN. SIDE YARD	15 FT	51.4'	51.4'
MIN. REAR YARD	15 FT	29.6'	29.6'
MAX. FLOOR AREA RATIO	0.15	0.32 *	0.33 *
MAX. BUILDING-TO-GROUND AREA (%)	25%	16.3% *	16.7% *
MAX. HEIGHT	30 FT	25 FT *	25 FT *
IMPERVIOUS AREA	60%	84%	81%

* NOT DETERMINED BY HAYES ENGINEERING, INC.

PARKING SPACE TABLE

* REQUIRED ON-SITE SPACES: MAX. 3 SPACES / 1,000 SF
42,874± SF ÷ 3 SPACES / 1,000 SF = 129 SPACES

EXISTING ON-SITE SPACES: 235 SPACES (2 HANDICAPPED)
PROPOSED ON-SITE SPACES: 213 SPACES (7 HANDICAPPED)

* BUILDING FLOOR AREA IS APPROXIMATE AND NOT BASED ON CALCULATIONS BY HAYES ENGINEERING, INC.

**SITE PLAN AT
5 COMMONWEALTH EXECUTIVE DRIVE
IN
BURLINGTON, MASS.**



Approved by the
BURLINGTON PLANNING BOARD

Application Filed **JAN. 6, 2004**

Hearing Date **FEB. 19, 2004**

Plan Approved **FEB. 19, 2004**

[Signatures]

SCALE: 1" = 40'

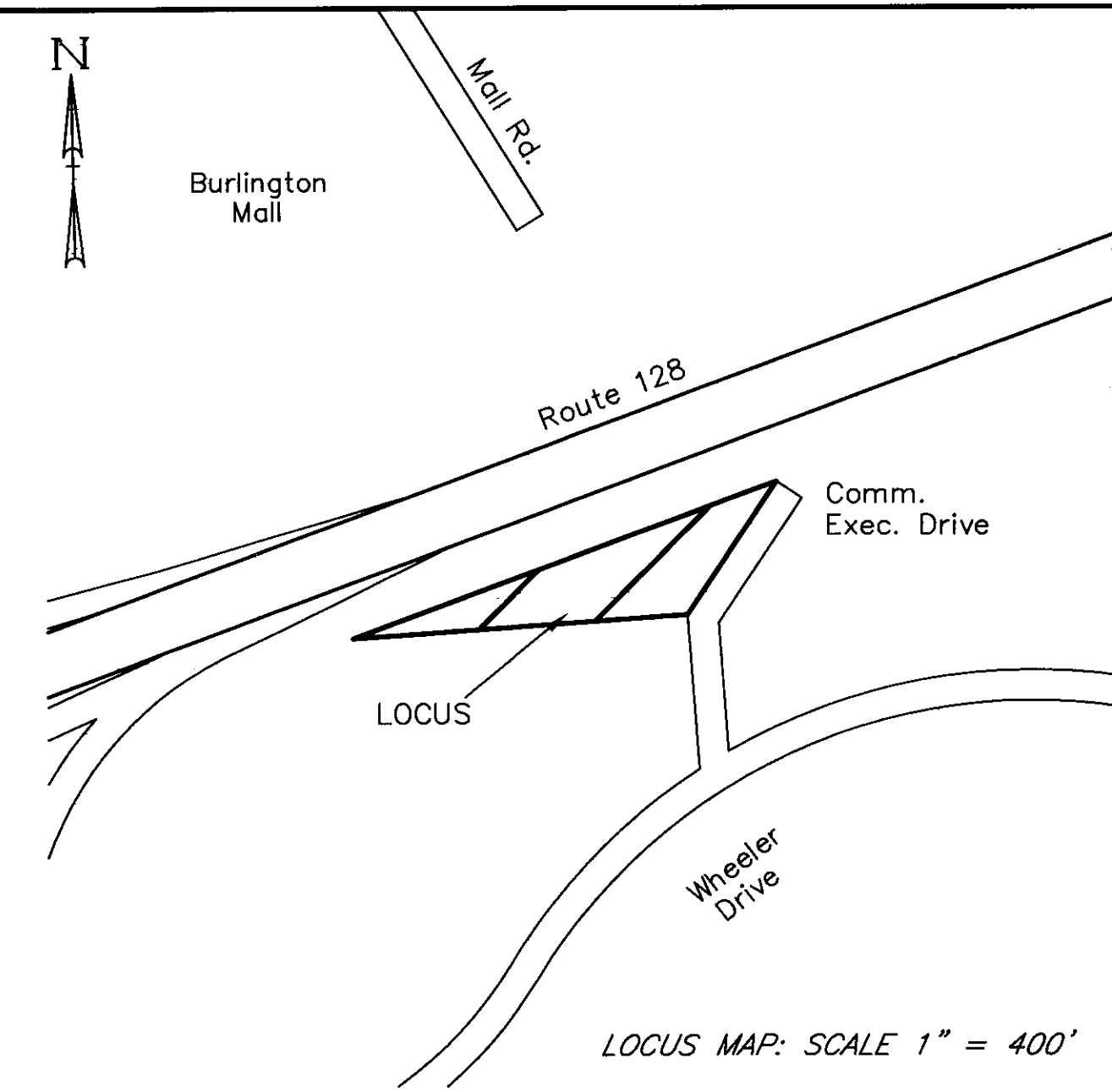
DECEMBER 16, 2003
REV. MARCH 22, 2004

HAYES ENGINEERING, INC.
CIVIL ENGINEERS & LAND SURVEYORS

603 SALEM STREET
WAKEFIELD, MASS. 01880
TEL. (781) 246-2800

BURLINGTON ASSESSOR'S MAP:
MAP 52
PARCEL 5

DEED REFERENCE:
BOOK 916
PAGE 152



S605