

REGISTRY USE ONLY

N/F NORTHLAND CAMBRIDGE STREET, LLC.
L.C. DEED BOOK 1332 PAGE 88

N/F MEPT BURLINGTON, LLC.
L.C. DEED BOOK 1383 PAGE 1

ADDRESS OF PROPERTY
76 CAMBRIDGE STREET
BURLINGTON, MASSACHUSETTS

OWNER OF RECORD
HELGA COSMAN, TRUSTEE
CHENES REALTY TRUST
872 CONCORD AVENUE
BELMONT, MASSACHUSETTS

DEED REFERENCE
LAND COURT DEED BOOK 1390 PAGE 66

PLAN REFERENCE
LAND COURT PLAN 26374-F
PLAN 1185 OF 1966
PLAN 923 OF 1989

ASSESSORS MAP REFERENCE
PARCEL 41-95-2
PARCEL 41-96-0

ZONING CLASSIFICATION
IG - GENERAL INDUSTRIAL

ADDRESS OF PROPERTY
78 CAMBRIDGE STREET
BURLINGTON, MASSACHUSETTS

OWNER OF RECORD
ERIC R. COSMAN, TRUSTEE
SEVENTY-EIGHT CAMBRIDGE
STREET REALTY TRUST
BURLINGTON, MASSACHUSETTS

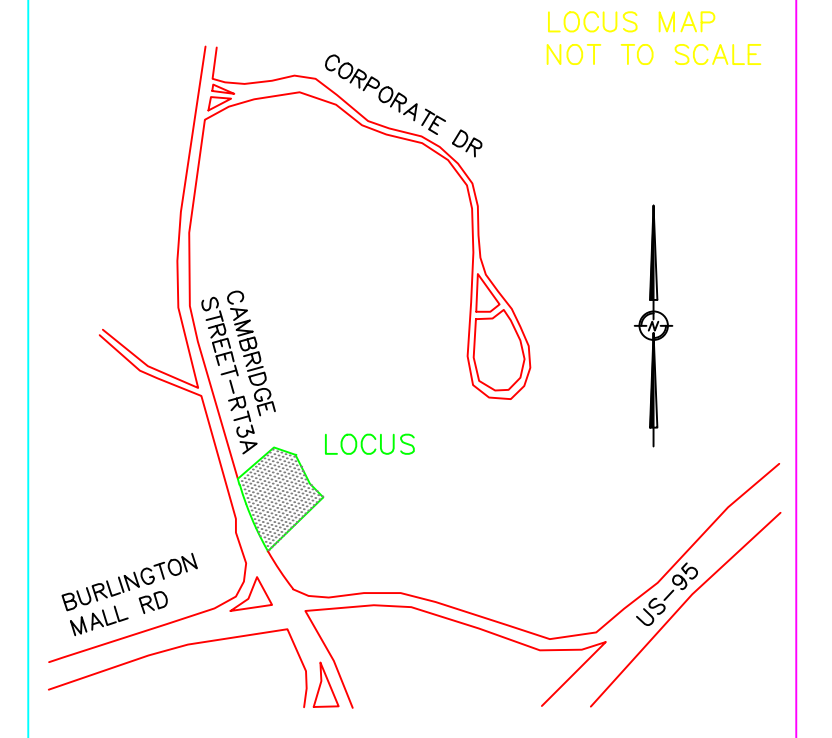
DEED REFERENCE
LAND COURT DEED BOOK 1354 PAGE 140

PLAN REFERENCE
LAND COURT PLAN 26374-F
LAND COURT PLAN 26374-H
PLAN 1185 OF 1966
PLAN 923 OF 1989

ASSESSORS MAP REFERENCE
PARCEL 41-95-1

ZONING CLASSIFICATION
IG - GENERAL INDUSTRIAL

LEGEND	
AC	AIR CONDITIONER
BCSW	BITUMINOUS CONCRETE SIDEWALK
BIT CURB	BITUMINOUS CURB
CCB	CAPE COD BERM
CB	CATCH BASIN
CRW	CONCRETE RETAINING WALL
C	CP TEST
DM	DRAIN MANHOLE
EP	EDGE OF PAVEMENT
EM	ELECTRIC METER
GG	GAS GATE
G	GAS METER
GW	GUY WIRE
L.C.	LAND COURT
UM	UNKNOWN MANHOLE
N/F	NOW OR FORMERLY
O	OIL FILL
RD	ROOF DRAIN
SCO	SEWER CLEANOUT
SMH	SEWER MANHOLE
UP	UTILITY POLE
V	UNKNOWN VALVE
VGC	VERTICAL GRANITE CURB
WG	WATER GATE
W	WETLAND
WF	WETLAND FLAG
WD FNC	WOOD FENCE



COMMONWEALTH ENGINEERING INC.
CIVIL ENGINEERS & LAND SURVEYORS

27 CAMBRIDGE STREET
SUITE 106
BURLINGTON, MA 01803
TEL (781) 229-0411
FAX (781) 229-0520
WWW.COMMONENG.COM

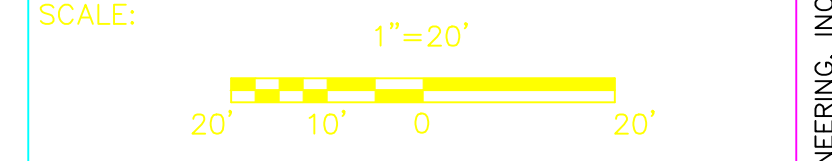
76 & 78
CAMBRIDGE STREET
IN
BURLINGTON
MIDDLESEX COUNTY
MASSACHUSETTS

MARCH 7, 2012
EXISTING CONDITIONS
PLAN OF LAND

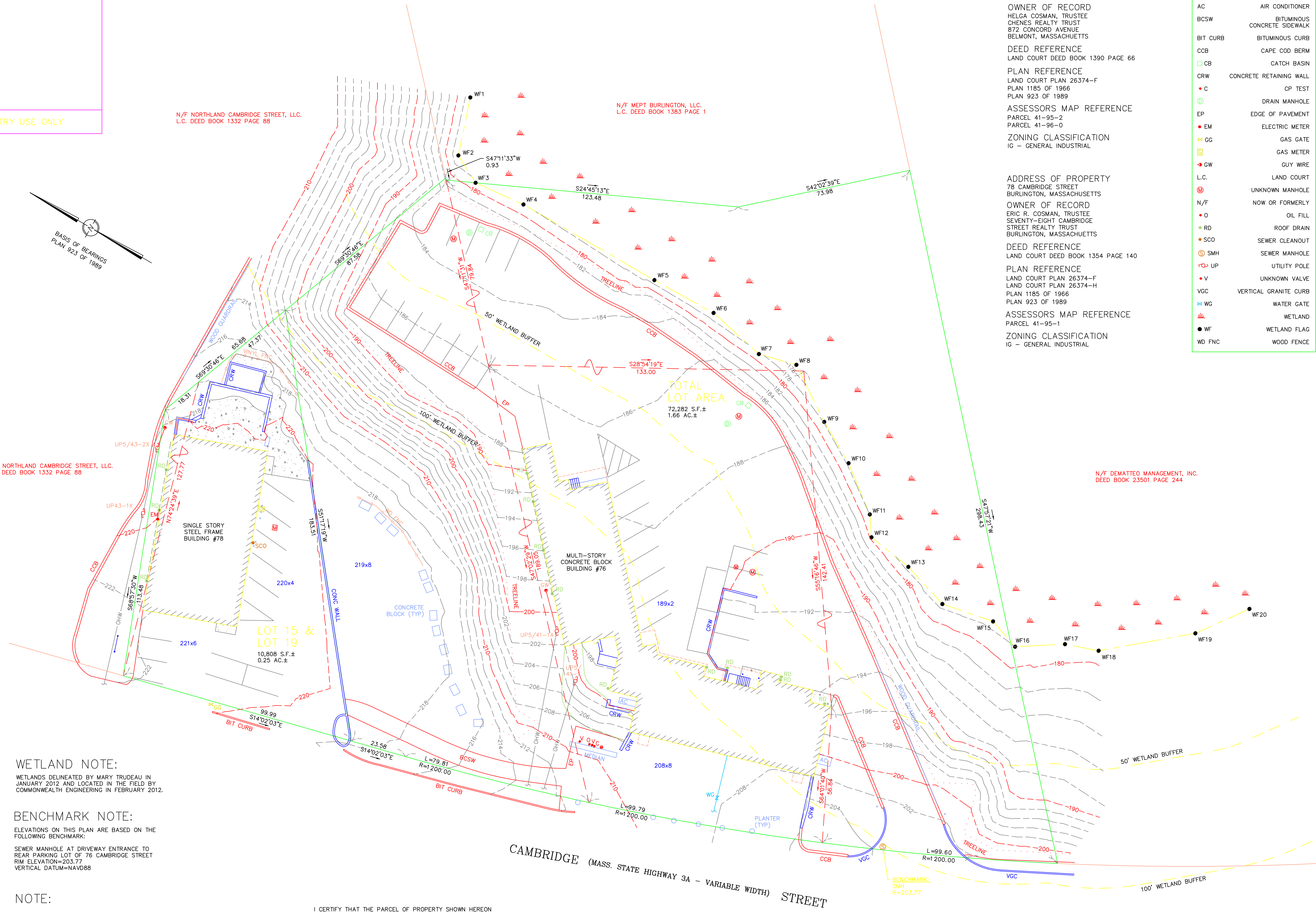
APPLICANT:
ERIC COSMAN
76 CAMBRIDGE STREET
BURLINGTON, MASSACHUSETTS

REVISIONS:

NO.	DATE	DESCRIPTION



FIELD: JPH/DDO	CALCULATED: DDO
DRAWN: JPH/DDO	CHECKED: DDO
FILE PATH (H:/PROJ): ... \212002.00\DWG\CEI-ECS-REV1.DWG	SHEET: 1
FIELD BOOK/PAGE:	
JOB NO.: 212002.00	



WETLAND NOTE:
WETLANDS DELINEATED BY MARY TRUDEAU IN JANUARY 2012 AND LOCATED IN THE FIELD BY COMMONWEALTH ENGINEERING IN FEBRUARY 2012.

BENCHMARK NOTE:
ELEVATIONS ON THIS PLAN ARE BASED ON THE FOLLOWING BENCHMARK:
SEWER MANHOLE AT DRIVEWAY ENTRANCE TO REAR PARKING LOT OF 76 CAMBRIDGE STREET
RIM ELEVATION=203.77
VERTICAL DATUM=NAVD88

NOTE:

- UTILITY LOCATIONS SHOWN ARE BASED UPON A FIELD SURVEY, CONTRACTORS' NOTES, AND RECORD UTILITY PLANS. THE LOCATIONS OF UNDERGROUND PIPES AND CONDUITS HAVE BEEN DETERMINED FROM THE AFOREMENTIONED ITEMS AND ARE APPROXIMATE ONLY. BEFORE PLANNING FUTURE CONNECTIONS, CONTACT "DISSAFE" AT 1-800-322-4844. IN ADDITION, THE CONTRACTOR SHALL COORDINATE CONSTRUCTION ACTIVITIES NEAR UTILITY LOCATIONS WITH THE RESPECTIVE UTILITY REPRESENTATIVE.

I CERTIFY THAT THE PARCEL OF PROPERTY SHOWN HEREON LIES WITHIN ZONE "X" AND IS OF MINIMAL FLOODING AS SHOWN ON THE FLOOD INSURANCE RATE MAP NUMBER 25017C0402E, EFFECTIVE DATE: JUNE 4, 2010.

DANIEL D. O'NEILL, PLS# 34622 DATE