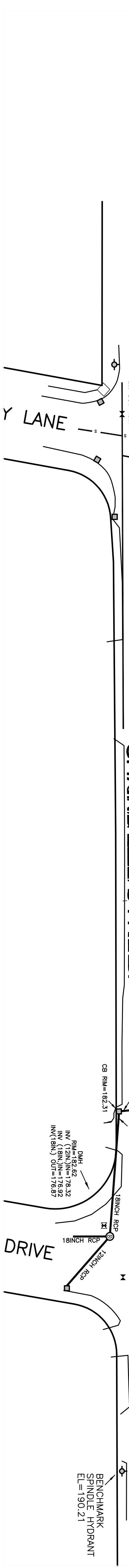
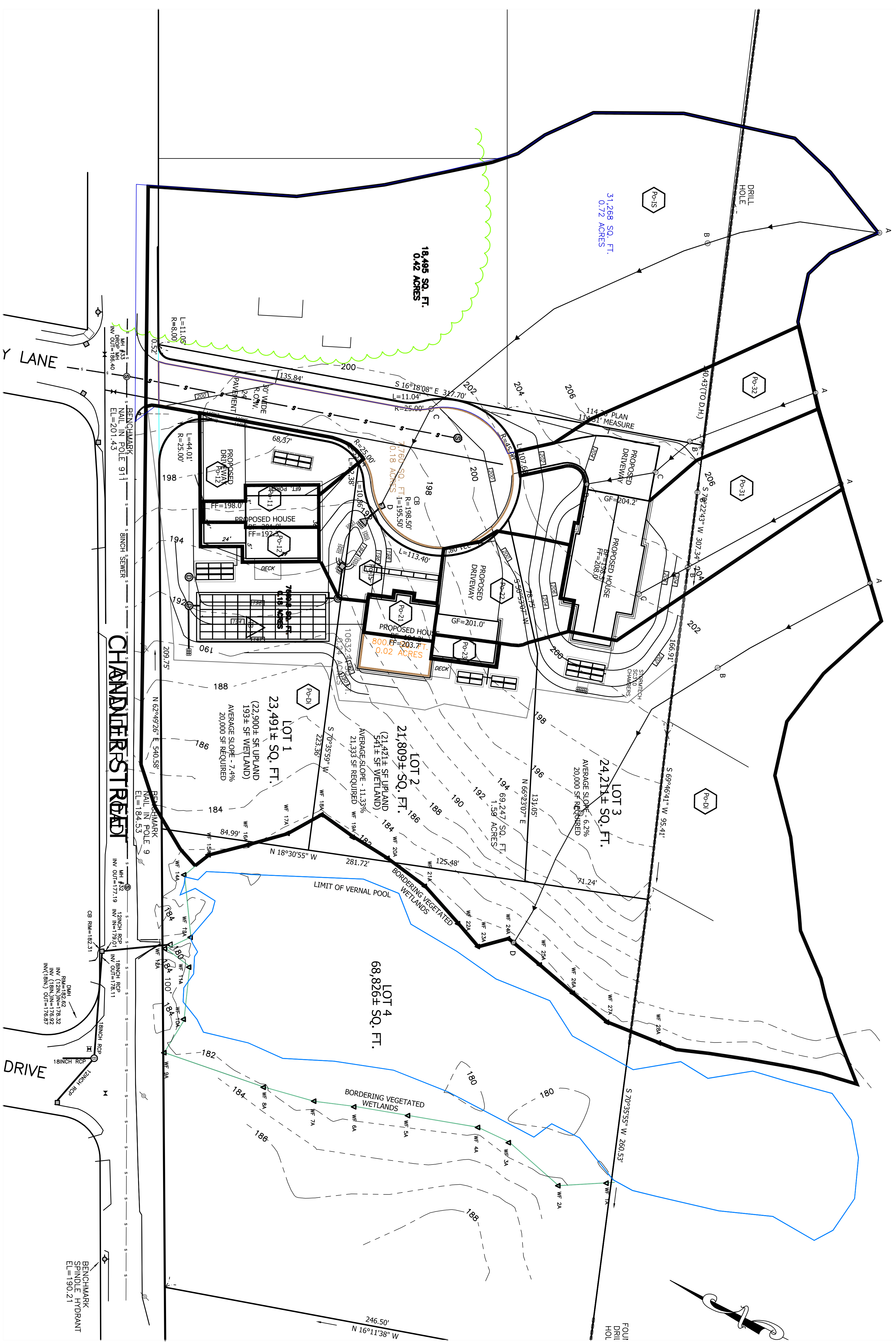


# MILL POND ESTATES



DEFINITIVE SUBDIVISION PLAN  
MILL POND ESTATES

MILL POND LANE  
BURLINGTON, MA

POSTDEVELOPMENT SUBCATCHMENTS

SCALE: 1" = 30'

MAY 15, 2020

**Dresser, Williams & Way, Inc.**  
572 BOSTON ROAD - UNIT 5 BILLERICA, MA  
TELEPHONE NO. (978) 653-5410  
E-MAIL: DW@DWMINC118VHDD.COM  
*Professional Engineers & Land Surveyors*

REVISION	DATE	COMMENTS
6/28/20		INFILTRATION STRUCTURE
REVIS		

APPLICANT:	GTH HOMES, LLC 11 BEDFORD STREET #3 BURLINGTON, MA 01803
OWNER:	GTH HOMES, LLC 11 BEDFORD STREET #3 BURLINGTON, MA 01803