

Notes:

SECURITY EQUIPMENT LEGEND

	ARCHITECTURAL PLANS DECTECT
	SECURITY EQUIPMENT LOCATIONS FOR CLIENT & SECURITY VENDOR
	360 DEGREE CAMERA
	FIXED CAMERA
	WALL MOUNT MOTION DETECTOR
	CEILING MOUNT MOTION DETECTOR
	ALARM CONTACT
	GLASS BREAK
	CARD READER
	ALARM KEY PAD

ELECTRICAL NOTES

- ELECTRICAL SUBCONTRACTOR IS TO PROVIDE PULL STRINGS AND JUNCTION BOXES FOR ALL DATA LINES, TYPICAL.
- SEE ENGINEER'S DRAWINGS FOR OUTLETTYPES AND LOCATIONS, TYP.
- GC TO COORDINATE ELECTRICAL REQUIREMENTS OF SECURITY EQUIPMENT WITH CLIENT.

	CARPET TILE - MANUFACTURER: MOHAWK GROUP, STYLE: INTEGRATE #87423, COLOR: ASPHALT #889, INSTALLATION METHOD: BRCK ASHLAR
	TRAFFIC MAT TILE - MOHAWK GROUP, STYLE: STEP UP II, INSTALLATION METHOD: QUARTER TURNED
	1224 VINYL COMPOSITION ARMSTRONGS STYLE: STRATIONS BR7, COLOR: STELL #1302, INSTALLATION: RUNNING BOND
	SEALED CONCRETE REPAIR AS REQUIRED
	2x2 FLOOR TILE - MANUFACTURER: AMERICAN OLEAN, STYLE: PANGLAZED COLORBODY, COLOR: LIGHT SMOKE, LATICRETE #404, GROUT: EXISTING

WALL BASE LEGEND

	4" COVE VINYL BASE - MANUFACTURER: JOHNSONITE, COLOR: BURNT UMBER #83
--	-----------------------------------------------------------------------

WALL FINISH LEGEND

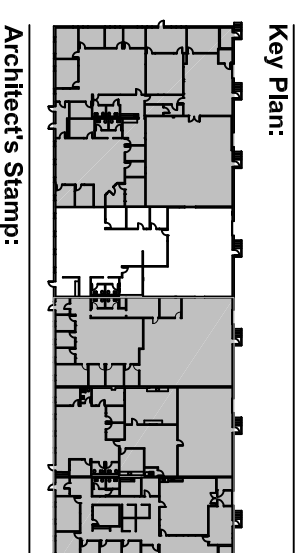
	PRIMARY PAINT - MANUFACTURER: DIAMOND #OC-61, FINISH: EGG SHELL
	DOOR FRAME PAINT - MOORE, COLOR: WHITE DIAMOND #OC-61, FINISH: SEMI-GLOSS
	DOOR PAINT - MANUFACTURER: EMBERS #1466, FINISH: SEMI-GLOSS
	ACCENT PAINT - MANUFACTURER: GREEN #2046-50, FINISH: EGG SHELL
	MANUFACTURING PROCESS ROOM PAINT - MANUFACTURER: BENJAMIN MOORE, SPECIFICATION: ULTRA SPEC SCUFF-X, COLOR: WHITE DIAMOND #OC-61, FINISH: EGG SHELL
	4x4 WALL TILE - MATCH EXISTING

PLASTIC LAMINATE LEGEND

	UPPER CABINET PLASTIC LAMINATE - MANUFACTURER: FORMICA, COLOR: FOLKSTONE #927-5P, FINISH: SCULPTED FINISH
	COUNTER PLASTIC LAMINATE - MANUFACTURER: WILSONART, COLOR: RINBALL #89738, FINISH: FINE VELVET
	LOWER CABINET PLASTIC LAMINATE - MANUFACTURER: PERMABOND, COLOR: SMOKY BROWN NATURELE

TRANSITION STRIP LEGEND

	VINYL - MANUFACTURER: JOHNSONITE, COLOR: BURNT UMBER #83, SIZE: CONFORM TO FIELD CONDITIONS
	MARBLE - ADA COMPLIANT MARBLE THRESHOLD



Architect's Stamp:

Project: Tiffany and Company
 1 North Ave
 Burlington, MA 01803

Client: Tiffany and Company
 300 Maple Ridge Drive
 Cumberland, RI 02864
 Tel: 401-283-2116

Project #: 17106
Scale: As Noted

Issue: Construction
Date: 04.27.18

Revisions:

Revisions:	Date:

Drawing Title: Finish Plan & Coordination Plan
Sheet Number: A.103
MAUGEL ARCHITECTS
 200 Ayer Road
 www.maugel.com
 978.456.280
 Harvard, MA

	CARPET TILE - MANUFACTURER: MOHAWK GROUP, STYLE: INTEGRATE #87423, COLOR: ASPHALT #889, INSTALLATION METHOD: BRCK ASHLAR
	TRAFFIC MAT TILE - MOHAWK GROUP, STYLE: STEP UP II, INSTALLATION METHOD: QUARTER TURNED
	1224 VINYL COMPOSITION ARMSTRONGS STYLE: STRATIONS BR7, COLOR: STELL #1302, INSTALLATION: RUNNING BOND
	SEALED CONCRETE REPAIR AS REQUIRED
	2x2 FLOOR TILE - MANUFACTURER: AMERICAN OLEAN, STYLE: PANGLAZED COLORBODY, COLOR: LIGHT SMOKE, LATICRETE #404, GROUT: EXISTING

WALL BASE LEGEND

	4" COVE VINYL BASE - MANUFACTURER: JOHNSONITE, COLOR: BURNT UMBER #83
--	-----------------------------------------------------------------------

WALL FINISH LEGEND

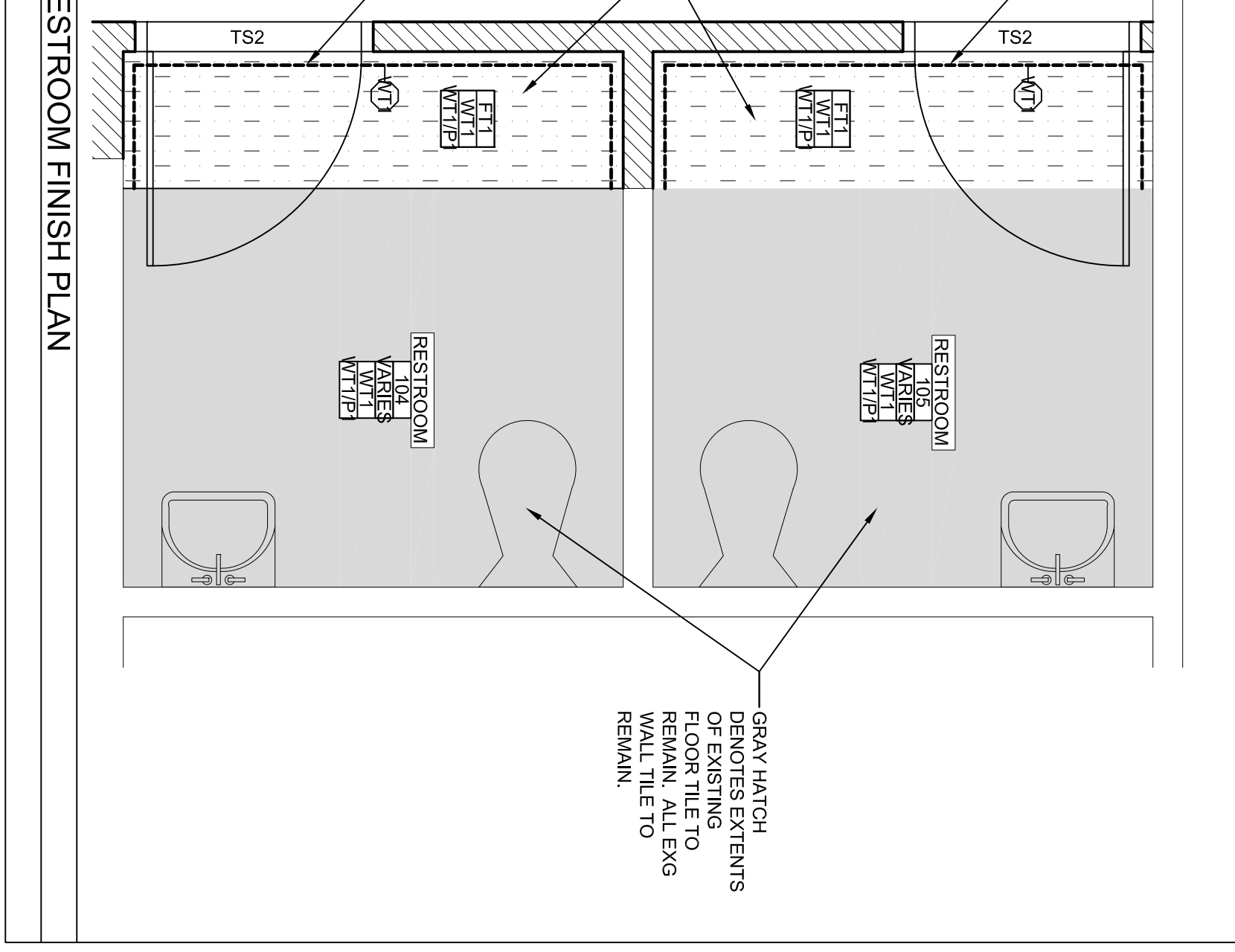
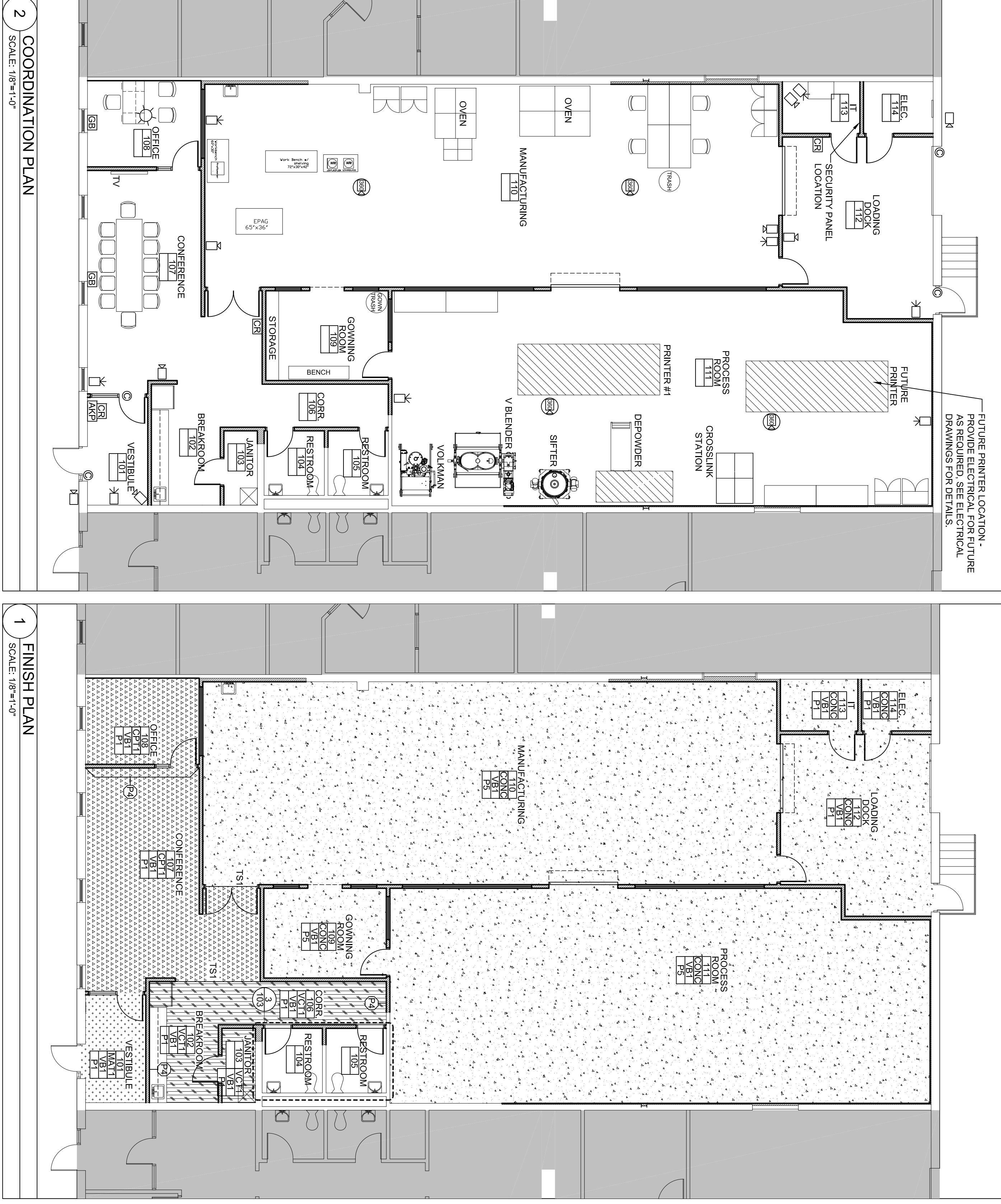
	PRIMARY PAINT - MANUFACTURER: DIAMOND #OC-61, FINISH: EGG SHELL
	DOOR FRAME PAINT - MOORE, COLOR: WHITE DIAMOND #OC-61, FINISH: SEMI-GLOSS
	DOOR PAINT - MANUFACTURER: EMBERS #1466, FINISH: SEMI-GLOSS
	ACCENT PAINT - MANUFACTURER: GREEN #2046-50, FINISH: EGG SHELL
	MANUFACTURING PROCESS ROOM PAINT - MANUFACTURER: BENJAMIN MOORE, SPECIFICATION: ULTRA SPEC SCUFF-X, COLOR: WHITE DIAMOND #OC-61, FINISH: EGG SHELL
	4x4 WALL TILE - MATCH EXISTING

PLASTIC LAMINATE LEGEND

	UPPER CABINET PLASTIC LAMINATE - MANUFACTURER: FORMICA, COLOR: FOLKSTONE #927-5P, FINISH: SCULPTED FINISH
	COUNTER PLASTIC LAMINATE - MANUFACTURER: WILSONART, COLOR: RINBALL #89738, FINISH: FINE VELVET
	LOWER CABINET PLASTIC LAMINATE - MANUFACTURER: PERMABOND, COLOR: SMOKY BROWN NATURELE

TRANSITION STRIP LEGEND

	VINYL - MANUFACTURER: JOHNSONITE, COLOR: BURNT UMBER #83, SIZE: CONFORM TO FIELD CONDITIONS
	MARBLE - ADA COMPLIANT MARBLE THRESHOLD



3 ENLARGED RESTROOM FINISH PLAN
 SCALE: 1/2"=1'-0"

2 COORDINATION PLAN
 SCALE: 1/8"=1'-0"

1 FINISH PLAN
 SCALE: 1/8"=1'-0"